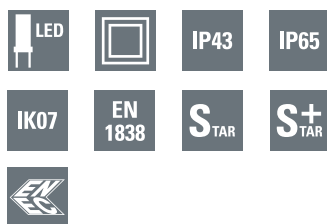


FlexiTech SE - Datasheet



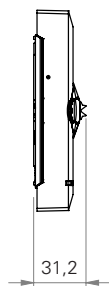
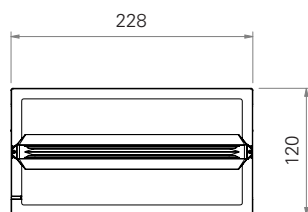
FlexiTech SE CG-S

- Safety luminaire, light distribution optimized for escape route applications
- Unobstrusive design and slim housing (31 mm)
- High output of 400 lm and high spacing in a compact housing
- Possibility to modify the light distribution by changing the optical lens (option)
- Same aesthetic in IP43 and IP65 versions
- Large working space, cable entries in flexible material and spirit level for easy and fast installation
- Transparent base plate with honeycomb footprint for easy replacement of existing products (IP43 use only)
- Complete range of accessories (recessed kit for ceiling, recessed box for plaster and brick wall, wire guard)

FlexiTech SE



Dimensions in mm



Luminous flux Φ_N	400 lm
Luminous flux Φ_E/Φ_N at end of rated operating time	100%
Housing material	Polycarbonate
Housing colour	White RAL 9003
Weight	0.4 kg
Type of mounting	Wall and ceiling mounting
Terminals	Clamp terminal 2 x 3 x 2.5 mm ²
Connection voltage	220 – 240 V AC, 50/60 Hz 176 – 275 V DC
Current consumption- battery operation (220 V)	23 mA
Power consumption mains operation (apparent power/effective power)	9.1 VA / 5.4 W
Inrush current	1.5 A
Permissible ambient temperature	-20°C to +40°C
Light source	LED stripe 3.5 W (6500K / CRI > 70)

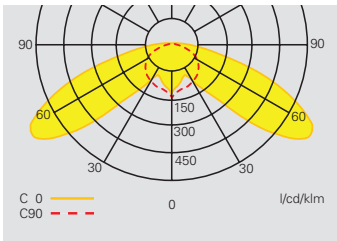
Ordering details

Type	Scope of supply	Order-No.
FlexiTech SE 400 CG-S, IP43	FlexiTech SL lens optic 400lm CG-S, IP43	FT2SE400CGS
FlexiTech SE 400 CG-S, IP65	FlexiTech SL lens optic 400lm CG-S, IP65	FT2SE400CGSIP

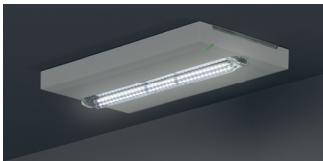
Ordering details Accessories

Type	Order-No.
Recess Kit for Ceiling, compatible with FlexiTech SE and FlexiTech ED (ceiling position)	FT2-RKC
Wire Guard, compatible with FlexiTech SE and FlexiTech ED	FT2-WG
Recessed Box for plaster and brick wall compatible with FlexiTech SE	FT2SE-RB
Opaque lens for open area lighting and wall mounting, for FlexiTech SE	FT2SE-LO

FlexiTech SE - Spacing data



Light distribution curve
FlexiTech SE 400 CG-S



FlexiTech SE 400 CG-S, clear lens (standard configuration), for E = 1 lx (0.5 lx)

Measuring level 0.02 m, maintenance factor MF = 80 %, battery operation, distances in m

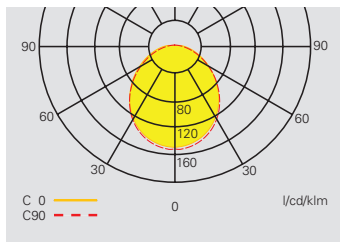
Ceiling mounting - Escape route center

Mounting height [m]	Lux level directly under				
2.5	7.7	3.2 (4.0)	8.1 (9.9)	6.0 (7.2)	14.5 (17.3)
3.0	5.4	3.3 (4.3)	8.6 (10.8)	6.5 (7.9)	15.8 (18.9)
3.5	3.9	3.3 (4.5)	8.9 (11.4)	6.9 (8.5)	16.9 (20.4)
4.0	3.0	3.2 (4.6)	9.2 (11.9)	7.2 (9.0)	18.0 (21.7)
4.5	2.4	3.0 (4.7)	9.3 (12.3)	7.4 (9.4)	18.9 (22.9)
5.0	1.9	2.7 (4.7)	9.3 (12.7)	1.9 (9.8)	18.3 (24.1)
5.5	1.6	2.3 (4.6)	9.1 (12.9)	1.5 (10.1)	15.2 (25.1)
6.0	1.3	1.7 (4.4)	8.7 (13.1)	1.0 (10.4)	14.3 (26.1)
6.5	1.1	0.8 (4.1)	8.3 (13.2)	0.4 (10.5)	13.9 (26.9)

Ceiling mounting - room illumination (array of 2x2 luminaires)

Mounting height [m]				
2,5	0.8 (0.8)	8.2 (10.0)	6.2 (7.3)	15.0 (17.9)
3,0	0.9 (1.2)	8.7 (10.9)	6.8 (7.9)	16.4 (19.5)
3,5	0.9 (0.7)	9.0 (11.5)	7.3 (8.6)	17.7 (21.2)
4,0	0.8 (0.8)	9.3 (12.1)	7.7 (9.1)	18.9 (22.6)
4,5	0.9 (0.6)	9.5 (12.5)	1.2 (9.6)	20.0 (24.0)
5,0	0.8 (0.8)	9.5 (12.9)	1.4 (1.4)	21.1 (25.2)
5,5	1.1 (0.5)	9.7 (13.1)	1.0 (10.6)	18.5 (26.5)
6,0	1.1 (0.6)	10.0 (13.3)	0.8 (2.4)	16.7 (27.6)
6,5	0.9 (0.6)	10.1 (13.5)	0.7 (1.1)	16.1 (28.7)

FlexiTech SE - Spacing data



Light distribution curve
FlexiTech SE 400 CG-S,
with optional lens FT2SE-LO

Planning help for FlexiTech SE 400 CG-S, with optional lens FT2SE-LO, for E = 1 lx (0.5 lx)
Measuring level 0.02 m, maintenance factor MF = 80 %, battery operation, distances in m

Ceiling mounting - Escape route center

Mounting height [m]	Lux level directly under				
2.5	19.5	4.1 (5.1)	10.1 (12.2)	4.2 (5.2)	10.4 (12.7)
3.0	13.5	4.4 (5.5)	10.9 (13.3)	4.5 (5.6)	11.2 (13.8)
3.5	10.0	4.7 (5.8)	11.7 (14.3)	4.7 (6.0)	11.9 (14.7)
4.0	7.6	4.9 (6.1)	12.3 (15.1)	4.9 (6.3)	12.5 (15.5)
4.5	6.0	5.0 (6.4)	12.8 (15.9)	5.0 (6.5)	13.0 (16.3)
5.0	4.9	5.1 (6.6)	13.2 (16.6)	5.1 (6.7)	13.4 (16.9)
5.5	4.0	5.1 (6.8)	13.6 (17.2)	5.1 (6.9)	13.8 (17.5)
6.0	3.4	5.1 (7.0)	13.9 (17.7)	5.1 (7.0)	14.1 (18.0)
6.5	2.9	5.1 (7.1)	14.1 (18.2)	5.1 (7.1)	14.3 (18.5)
7.0	2.5	5.0 (7.2)	14.3 (18.7)	5.0 (7.2)	14.4 (18.9)
7.5	2.2	4.9 (7.2)	14.4 (19.0)	4.9 (7.3)	14.5 (19.3)
8.0	1.9	4.7 (7.2)	14.5 (19.4)	4.7 (7.3)	14.5 (19.6)
8.5	1.7	4.4 (7.2)	14.5 (19.7)	4.4 (7.3)	14.5 (19.9)
9.0	1.5	4.1 (7.2)	14.4 (19.9)	4.1 (7.2)	14.4 (20.1)
9.5	1.4	3.7 (7.1)	14.3 (20.1)	3.6 (7.2)	14.3 (20.3)
10.0	1.2	3.2 (7.0)	14.1 (20.2)	3.1 (7.0)	14.1 (20.4)
10.5	1.1	2.4 (6.9)	13.8 (20.4)	2.3 (6.9)	13.8 (20.5)
11.0	1.0	1.0 (6.7)	13.5 (20.4)	0.7 (6.7)	13.4 (20.6)

Ceiling mounting - room illumination (array of 2x2 luminaires)

Mounting height [m]				
2.5	3.3 (3.9)	8.8 (10.7)	3.1 (3.7)	8.8 (10.6)
3.0	3.5 (4.2)	9.6 (11.6)	3.3 (4.0)	9.5 (11.5)
3.5	3.6 (4.4)	10.2 (12.4)	3.5 (4.2)	10.2 (12.4)
4.0	3.7 (4.5)	10.8 (13.1)	3.6 (4.5)	10.8 (13.3)
4.5	3.8 (4.6)	11.3 (13.7)	3.7 (4.7)	11.3 (14.1)
5.0	3.9 (4.9)	11.8 (14.5)	3.7 (4.7)	11.7 (14.5)
5.5	3.8 (5.0)	12.2 (15.1)	3.8 (4.8)	12.2 (15.1)
6.0	3.9 (5.1)	12.6 (15.7)	3.7 (4.9)	12.5 (15.6)
6.5	3.8 (5.2)	12.9 (16.2)	3.7 (5.0)	12.9 (16.1)
7.0	3.7 (5.2)	13.2 (16.6)	3.7 (5.1)	13.2 (16.6)
7.5	3.7 (5.2)	13.5 (17.1)	3.5 (5.0)	13.4 (17.0)
8.0	3.5 (5.2)	13.7 (17.4)	3.4 (5.1)	13.7 (17.5)
8.5	3.4 (5.1)	13.9 (17.8)	3.3 (5.1)	13.9 (17.9)
9.0	3.3 (5.2)	14.1 (18.2)	3.1 (5.0)	14.0 (18.1)
9.5	3.1 (5.1)	14.2 (18.5)	2.9 (4.9)	14.1 (18.5)
10.0	2.8 (5.1)	14.3 (18.8)	2.7 (4.9)	14.2 (18.7)
10.5	2.5 (4.9)	14.4 (19.1)	2.4 (4.7)	14.3 (19.0)
11.0	2.3 (4.6)	14.4 (19.1)	2.1 (4.8)	14.3 (19.5)