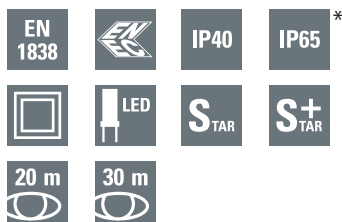


NexiTech LED™ CG-S

Safety lighting and exit sign luminaire



NexiTech LED™ CG-S

- Safety and escape sign luminaire with LED technology
- Combined version "Door" specific for emergency exit illumination
- Numerous knock-outs for cable entries and double terminal for through-wiring
- Minimum service requirement due to high service life of the LEDs (50.000 hours)
- Shortened inspection effort due to CEWA GUARD technology
- Automatic function monitoring of up to 20 luminaires per circuit
- Freely programmable mixed operation of the switching modes per luminaire in one circuit

NexiTech LED™ CG-S Standard indoor version IP40



Viewing distance	20 m (single-sided), 30 m (double-sided)
Luminous flux Φ_{NOM}	250 lm, 500lm, 250+30 lm (Versione Door)
Luminous flux $\Phi_{\text{E}}/\Phi_{\text{NOM}}$ at the end of rated operating time	100%
Housing material	Polycarbonate (850° glow wire resistant)
Housing colour	White
Weight	0.45 kg
Type of mounting	Wall and ceiling mounting, surface of recessed installation in false ceiling and bricks wall
Connection terminals	Quick plug in terminals up to 2.5 mm ² for rigid and flexible cable
Connection voltage	220 - 240 V AC, 50/60 Hz 176 - 275 V DC
Current consumption- battery operation	250lm: 25,5 mA @ 160 V DC (4W) 500lm: 49,5 mA @ 160 V DC (8W) Door: 32 mA @ 160 V DC (5W)
Power consumption mains operation	250lm: 33 mA @ 230 V AC (4W) 500lm: 56 mA @ 230 V AC (8W) Door: 39 mA @ 230 V AC (5W)
Permissible ambient temperature	-10 °C to +40 °C
Light source	29 LED (250lm), 60 LED (500lm), 29+2 LED (Door)

NexiTech LED™ CG-S with IP65 protection kit



NexiTech LED™ CG-S with double side panel



Ordering details

Type	Order No.
Universal application luminaire for safety and escape route panel luminaire with 250lm of luminous flux, including LED-supply with CG-S technology and 20-digit address switch	NEXI250-CGS
Universal application luminaire for safety and escape route panel luminaire with 500lm of luminous flux, including LED-supply with CG-S technology and 20-digit address switch	NEXI500-CGS
Combined luminaire specific for emergency exits's illumination, including LED-supply with CG-S technology and 20-digit address switch, without pictograms	NEXI-D-CGS

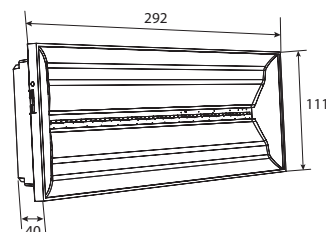
Single side glue-less pictogram
Order No. NEXI-PICTO-x



Ordering details - Double side panels and single side pictograms

Type	Order No.
Double side panels with 30 m viewing distance	
Double side panels with silkscreened pictograms DOWN/DOWN, ISO7010	NEXI-PLEXL-DD
Double side panels with silkscreened pictograms LEFT/RIGHT, ISO7010	NEXI-PLEXL-LR
Double side panels with silkscreened pictograms DOWN/BLIND, ISO7010	NEXI-PLEXL-DB
Single side pictograms with 20 m viewing distance	
Single side glue-less pictogram DOWN, ISO7010	NEXI-PICTO-D
Single side glue-less pictogram LEFT, ISO7010	NEXI-PICTO-L
Single side glue-less pictogram RIGHT, ISO7010	NEXI-PICTO-R
Single side glue-less pictogram UP, ISO7010	NEXI-PICTO-U

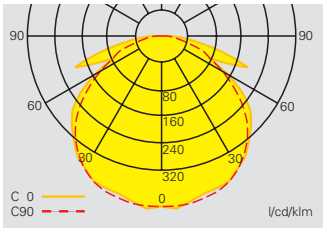
Dimensions in mm



Accessories

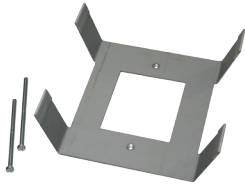
Type	Order No.
IP65 Protection kit	NEXI-IP
Bricks wall recessed base (cut-out 277x100 mm)	NEXI-RB
False ceiling adapter (cut-out 272x95 mm)	NEXI-FC

* With accessory protection kit IP65 (NEXI-IP)



Light distribution curve NexiTech LED™ CG-S

False ceiling adapter
Order No. NEXI-FC



Recessed base for bricks wall
Order No. NEXI-RB



IP65 protection kit - 308x125x53 mm



NexiTech LED™ DOOR CG-S
Detail of additional LEDs



Planning assistance for NEXI250-CGS for E = 1.0 lx (0.5 lx)

Measuring height 0.02 m, maintenance factor MF= 80%, battery operation

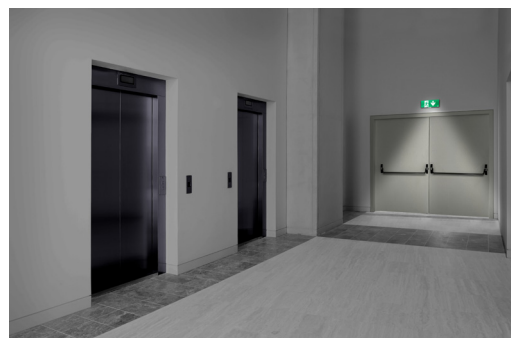
Mounting height [m]	Types of mounting	L1	L2	L3	L4
2,5	Room illumination	3,4(4,0)	7,8(9,4)	3,4(4,0)	7,8(9,4)
2,8		3,5(4,2)	8,3(9,9)	3,5(4,2)	8,3(9,9)
3,0		3,5(4,3)	8,6(10,3)	3,5(4,3)	8,6(10,3)
4,0		3,8(4,7)	9,6(11,8)	3,8(4,7)	9,6(11,8)
5,0		3,7(4,8)	10,1(12,7)	3,7(4,8)	10,1(12,7)
6,0		3,5(4,9)	10,8(13,6)	3,5(4,9)	10,8(13,6)
7,0		3,0(4,9)	11,3(14,4)	3,0(4,9)	11,3(14,4)

Planning assistance for NEXI500-CGS for E = 1.0 lx (0.5 lx)

Measuring height 0.02 m, maintenance factor MF= 80%, battery operation

Mounting height [m]	Types of mounting	L1	L2	L3	L4
2,5	Room illumination	3,8 (4,6)	8,9 (10,6)	3,8 (4,6)	8,9 (10,6)
2,8		3,9 (4,7)	9,5 (11,2)	3,9 (4,7)	9,5 (11,2)
3,0		4,0 (4,9)	9,8 (11,6)	4,0 (4,9)	9,8 (11,6)
4,0		4,4 (5,4)	11,1 (14,3)	4,4 (5,4)	11,1 (14,3)
5,0		4,6 (5,8)	12,2 (15,1)	4,6 (5,8)	12,2 (15,1)
6,0		4,6 (6,1)	13,1 (16,1)	4,6 (6,1)	13,1 (16,1)
7,0		4,6 (6,2)	13,8 (17,2)	4,6 (6,2)	13,8 (17,2)

NexiTech LED™ CG-S - Version DOOR



The combined version "Door" of NexiTech LED™ CG-S allows to get two functions in one luminaire: single-side exit sign with 20 m viewing distance and safety lighting for emergency door as requested by standard EN1838.

In addition to the main LEDs used for backlighting of the pictogram, NexiTech LED™ Door CG-S has 2 additional LEDs on the bottom of the luminaire for the lighting of emergency exit in accordance with the regulatory requirements.

Illuminance values NexiTech LED™ Door CG-S

Workplane H 1m. Luminaire installation height H 2,3m, environment height 3m

